




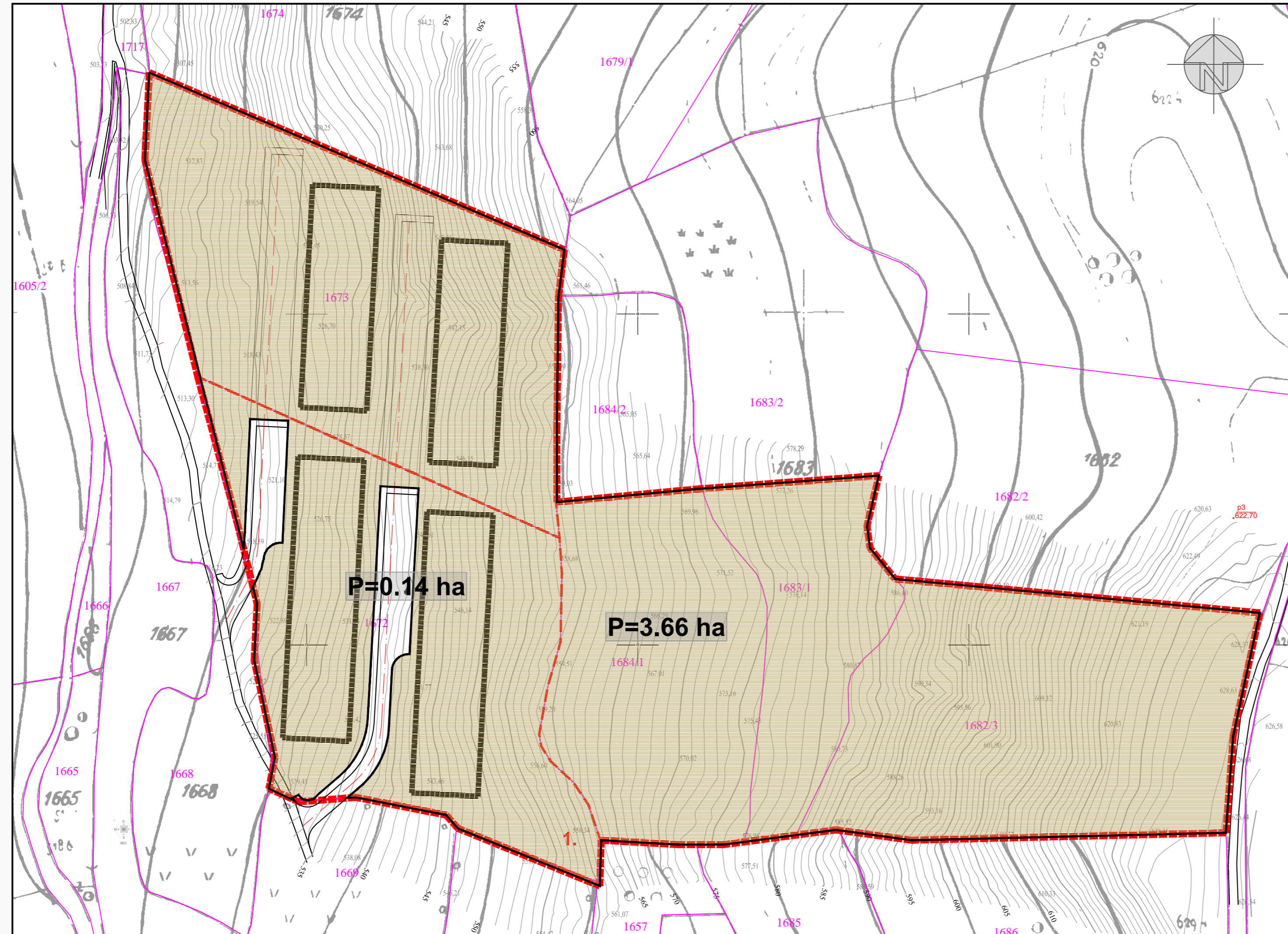
# REGULACIONI PLAN "LJUBNIĆI" - ILIJAŠ

1:1000

## PLANIRANA NAMJENA POVRŠINA

### LEGENDA :

-  GRANICA OBUHVATA
-  ZONA PRIVREDE (P= 3,66 ha)
-  SAOBRAĆAJNE POVRŠINE (P= 0,14 ha)



### ZAVOD ZA PLANIRANJE RAZVOJA KANTONA SARAJEVO

NARUČILAC: NAČELNIK OPĆINE ILIJAŠ		PLANER: ZINAIDA KADRIBEGOVIĆ, dipl.ing.arh.	
ELABORAT: REGULACIONI PLAN "LJUBNIĆI" - ILIJAŠ			
FAZA: URBANIZAM	MJERILO: 1 : 1000		
SADRŽAJ: PLANIRANA NAMJENA POVRŠINA			
KOORDINATOR SEKTORA: STANISLAVA MARINOVIĆ, dipl.ing.arh.		VEL.LISTA: 600 x 292 cm	DATUM: Februar, 2015.
		LIST BROJ: 5.	